



# LANA GROSSA

## NUVOLETTA Art. 1154

42 % Alpaka (Baby), Alpaca (Baby)  
 42 % Schurwolle (Merino extrafine),  
 Virgin Wool (Merino extrafine)  
 16 % Polyamid, Polyamide



10 x 50 g



ca. 250 m  
 per 50 g



4-5



10 x 10 cm



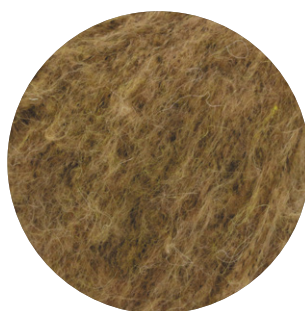
Gr. 38-40  
 ca. 250-300 g



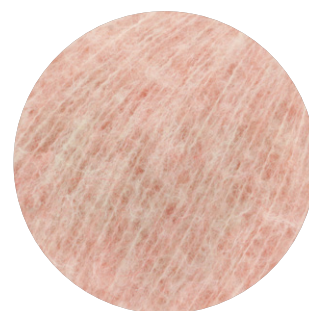
1



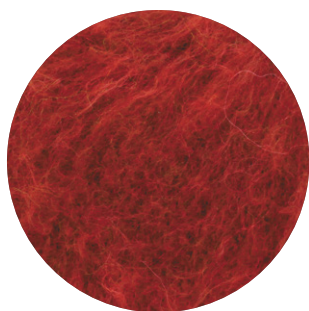
2



3



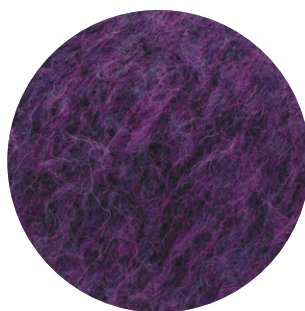
4



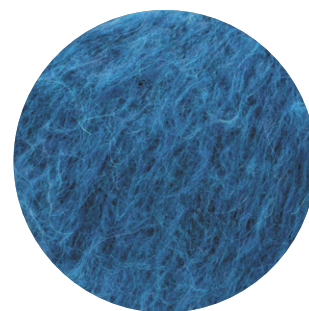
5



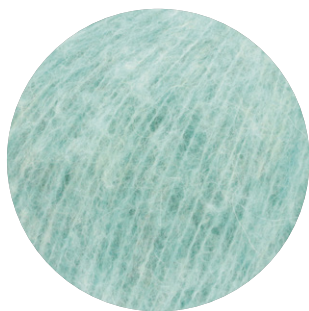
6



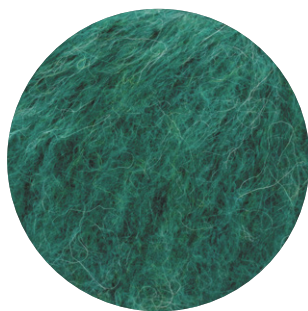
7



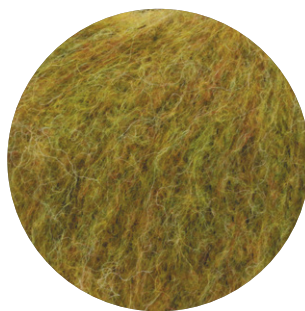
8



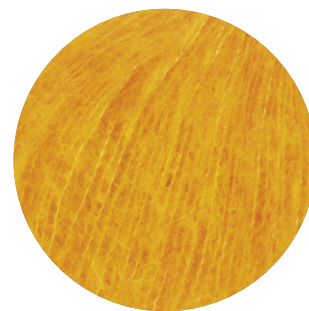
9



10



11



12

**LANA GROSSA GmbH**

Ingolstädter Straße 86 · 85080 Gaimersheim · Tel. +49 (0)8458 61-0 · Fax +49 (0)8458 61-36 · [www.lanagrossa.de](http://www.lanagrossa.de)



# LANA GROSSA

## NUVOLETTA Art. 1154

42 % Alpaka (Baby), Alpaca (Baby)  
 42 % Schurwolle (Merino extrafine),  
 Virgin Wool (Merino extrafine)  
 16 % Polyamid, Polyamide



10 x 50 g



ca. 250 m  
per 50 g



4-5



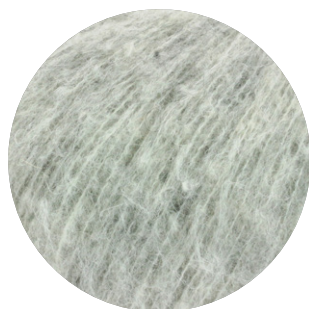
10 x 10 cm



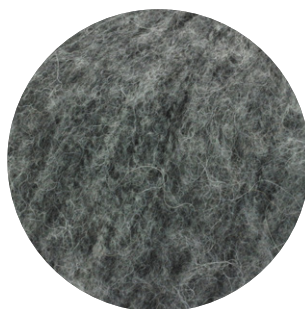
Gr. 38-40  
ca. 250-300 g



13



14



15



16

**LANA GROSSA GmbH**

Ingolstädter Straße 86 · 85080 Gaimersheim · Tel. +49 (0)8458 61-0 · Fax +49 (0)8458 61-36 · [www.lanagrossa.de](http://www.lanagrossa.de)