



# LANA GROSSA

**PER FORTUNA** Art. 1634

74 % Baumwolle, Cotton  
26 % Polyamid, Polyamide



10 x 50 g



ca. 190 m  
per 50 g



4-4,5



10 x 10 cm

30 R

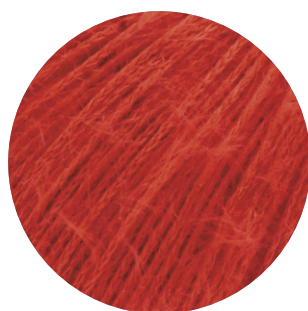
22 M



Gr. 38-40  
ca. 300-350 g



1



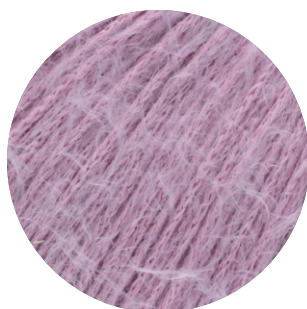
2



3



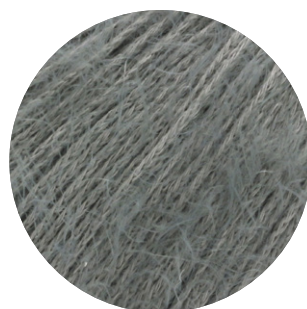
4



5



6



7



8



9



10



11



12

**LANA GROSSA GmbH**

Ingolstädter Straße 86 · 85080 Gaimersheim · Tel. +49 (0)8458 61-0 · Fax +49 (0)8458 61-36 · [www.lanagrossa.de](http://www.lanagrossa.de)



# LANA GROSSA

## PER FORTUNA Art. 1634

74 % Baumwolle, Cotton  
26 % Polyamid, Polyamide



10 x 50 g



ca. 190 m  
per 50 g

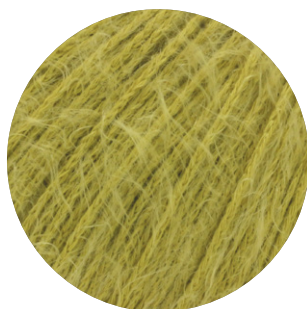


4-4,5

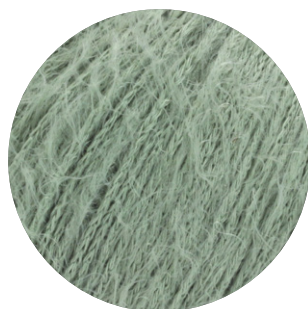
10 x 10 cm



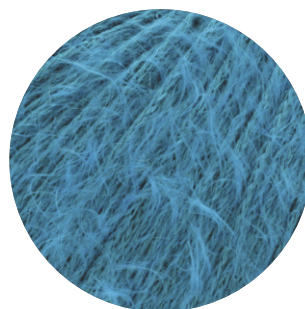
Gr. 38-40  
ca. 300-350 g



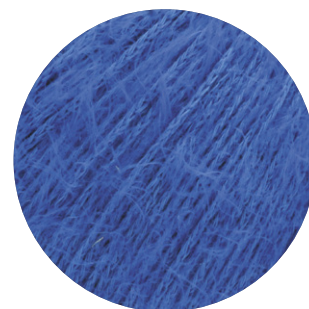
13



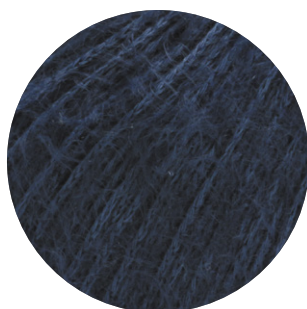
14



15



16



17



18



19



20

**LANA GROSSA GmbH**

Ingolstädter Straße 86 · 85080 Gaimersheim · Tel. +49 (0)8458 61-0 · Fax +49 (0)8458 61-36 · [www.lanagrossa.de](http://www.lanagrossa.de)